



# Reviving a traditional farm cider and perry orchard in Herefordshire

John Watkins

Head of Gardens and Landscape

English Heritage Trust



Wrest Park, Bedfordshire



Belsay Hall,  
Northumberland

English  
Heritage  
Walled Garden  
Fruit

Walmer Castle, Kent



Osborne House  
Isle of Wight



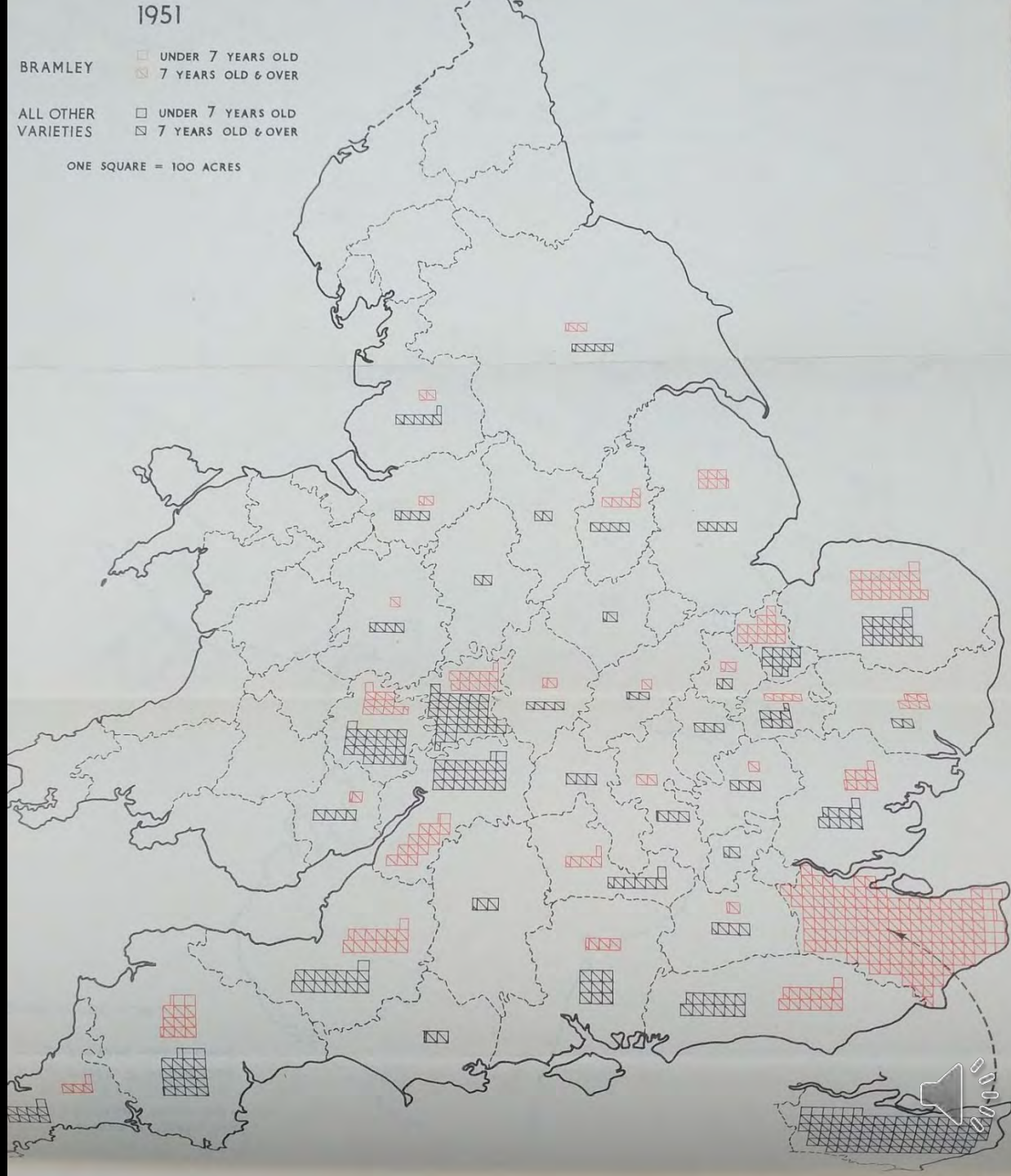
Audley End, Essex

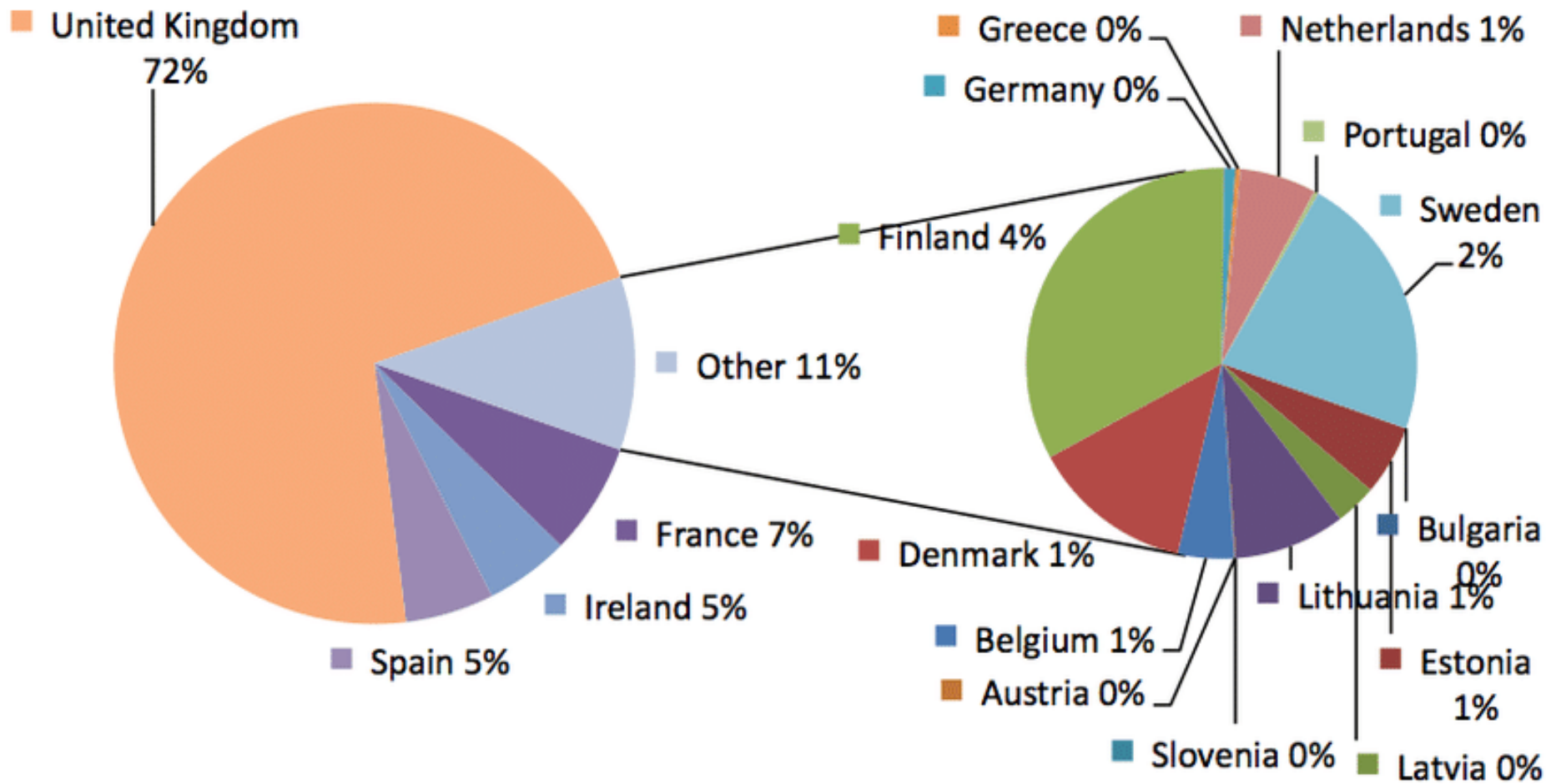


In March 2010:  
Countryside  
Stewardship Grant  
to restore: a farm  
pond, hedges,  
species diverse  
meadows and half  
of the 17 acres  
restored to a  
traditional cider  
and perry orchard.



# Distribution of culinary apples grown in England and Wales in 1951





Cider and perry sales, market share by country, 2010



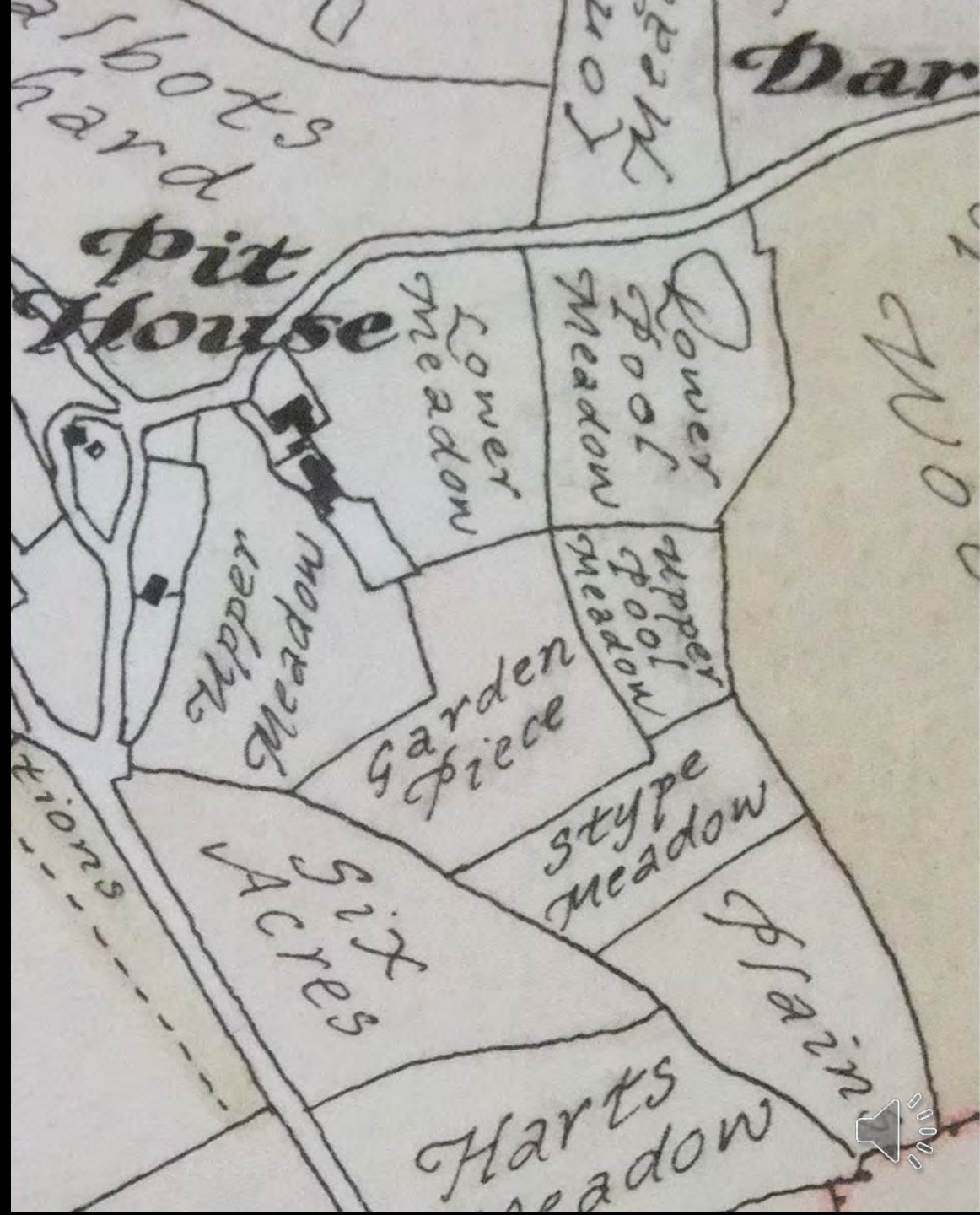


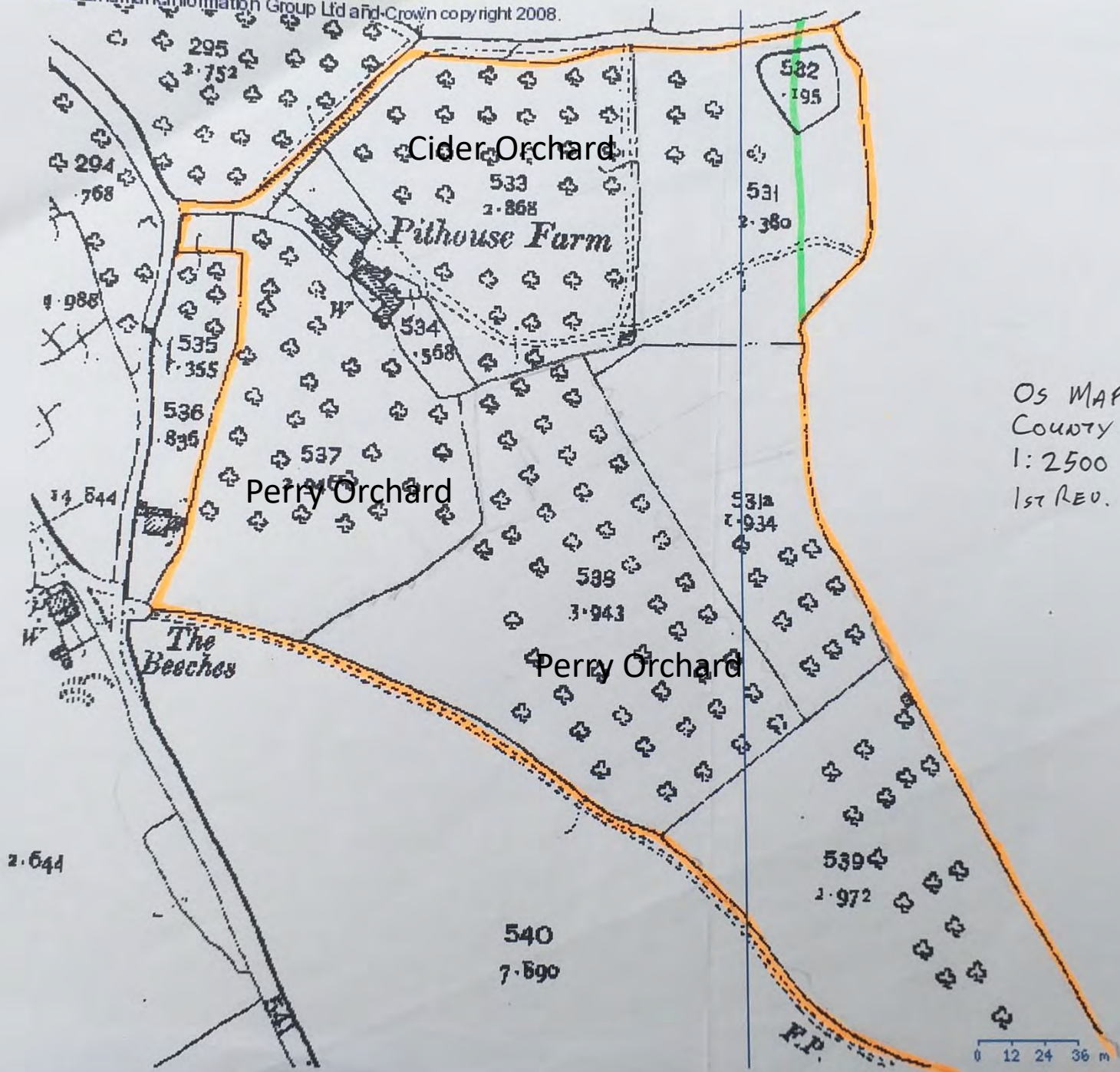
Farm in Spring 2009

Cider Orchard early  
Autumn 2019



Parish Survey of 1839





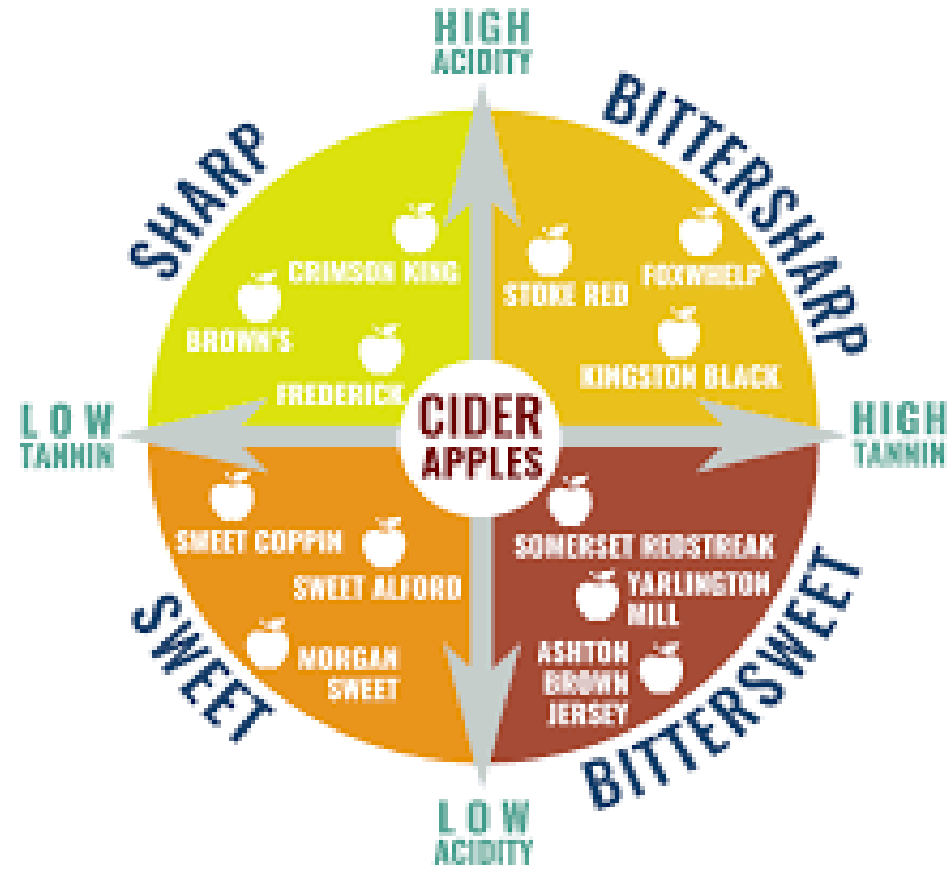
OS MAP  
 COUNTY SERIES  
 1:2500  
 1st REV. 1893-1915



Pithouse Farm Cider Apples

Plan no	No supplied	
1		Ashton Brown Jersey
		Balls Bittersweet
2	10	Browns Apple
3	2	Broxwood Foxwhelp
4	30	Bulmers Norman
5	1	Chisel Jersey
6	1	Court Royal
7	5	Dabinet
8	1	Frederick
9	5	Harry Masters Jersey
10	5	Kingston Black
		Knotted Kernel
11	1	Major
12	1	Northwood
13	1	Poters Perfection
14	1	Somerset Redstreak
		Stoke Red
15	1	Sweet Copin
16	1	Tremetts Bitter
17	5	Yarlington Mill
18	5	Brown Snout
19		Herefordshire Redstreak (4)
20		Pedington Brandy (4)
21		Kill Boys (2)

# Selection and planning of cider apple cultivars



Consider flowering and harvest season when planting

CULINARY APPLES			Flowering	Harvest	Eating Season
E1	1	1 Adam's Permain		e/m Oct-Nov	Nov-March
E2	1	Asmead's Kernel		e/m Oct-Nov	Dec-Feb
E3	1	Blenheim Orange		L-Sept/e-Oct	Oct-Jan
E4	1	Catshhead		e-Oct	Oct-Jan
E5	1	Court Pendu Plat		m/L Oct	Dec-April
E6	1	D'Arcy Spice		L-Oct	Jan-May
E7	1	Pitmaston Pineapple		e-Oct,	Oct-Dec
E8	1	Worcester Permain		e/m-Sept	Sept-Oct

The best ciders are often made from blends of bittersharp/sweet and bittersweet/sharp which is determined by the balance of tannins and level of acidity in the fruit.

*Applies spaced at 35 feet = 10.668m  
80 trees*

*Field 9593*

1:1000

*100 trees  
in new*

Mapping trees on the historic Ordinance Survey. Consider layout square or quincunx. Trees planted based on historic grid of 35 foot (10.668M).



CIDER ORCHARD  
 PIT HOUSE FARM.  
 PLANTED WINTER 2010/11

POSITION OF HOUSE

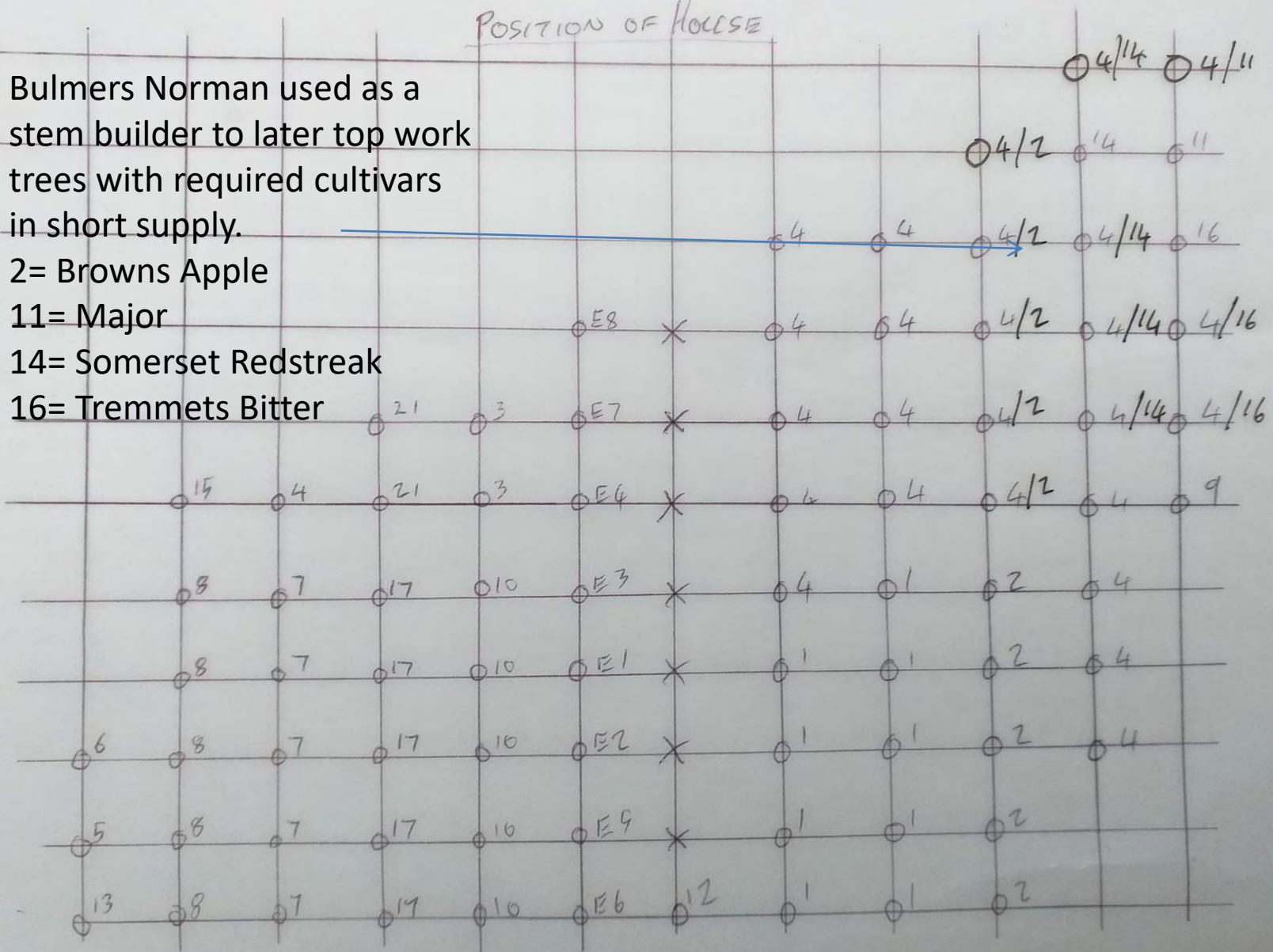
Bulmers Norman used as a stem builder to later top work trees with required cultivars in short supply.

2= Browns Apple

11= Major

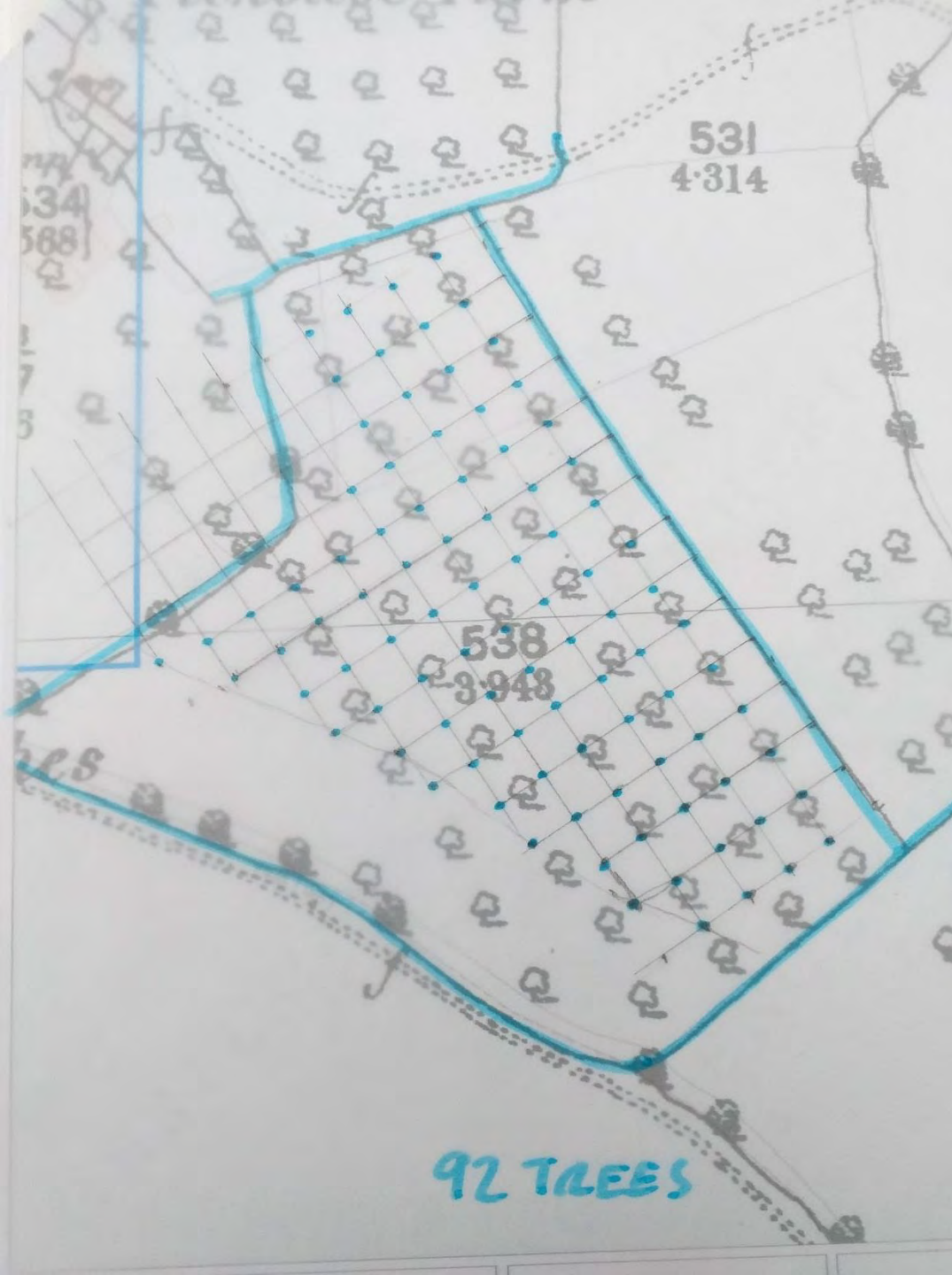
14= Somerset Redstreak

16= Tremmets Bitter



Maiden trees grafted on M25 vigorous rootstocks were selected. Initial planting in 2010 followed by further 2 seasons of planting completed in 2012. Trees protected within 2x2m shelters, trees mulched with straw and fields grazed by sheep.

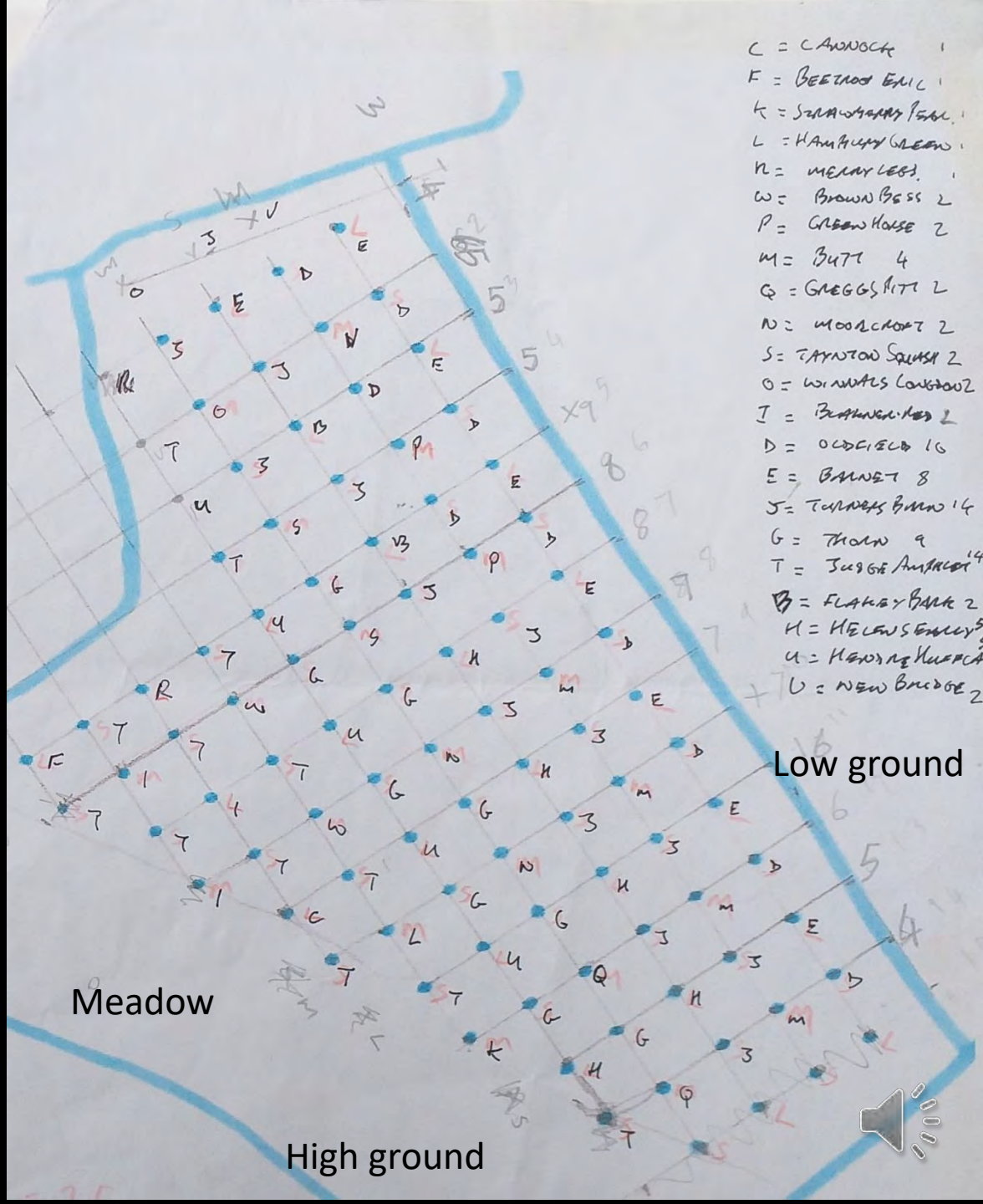




Plotting of positions for 92 perry pear trees, using historic OS map as a guide.



Field planting plan, note avenues numbered and code for each cultivar. Early flowering cultivars are planted at the top of the hill so they will not sill in a potential frost pocket at the bottom of the field.



# Cider apple trees in Spring 2018 and Autumn 2021



Browns Apple



Pitmaston Pineapple



Herefordshire  
Redstreak



Brown Snout



Chisel Jersey



# Perry pears in Spring 2019 and Autumn 2021



Blakeney Red



Green Horse







Branch Structure



Bacterial Canker

Problems



# Processing Cider Apples and Perry Fruit

Horse or pony powered mill  
crushes and grinds the fruit  
into a pomace that can be  
pressed.



A cider press and mill were to be found in many farm barns in the 18<sup>th</sup> and 19<sup>th</sup> centuries. The pomace is built up in 'cheeses' wrapped in hessian, then gradually pressed to remove the juice, which is then fermented for 6 months





Thank you

